

# Beach

## *Psalm 23*

The Lord is my shepherd,  
I shall not want. He maketh me to  
lie down in green pastures; He leadeth  
me beside still waters. He restoreth my soul;  
He leadeth me in the paths of righteousness  
for His name's sake. Yea, though I walk  
through the valley of the shadow of death,  
I will fear no evil; for Thou art with me;  
Thy rod and Thy staff, they comfort me.  
Thou preparest a table before me in the  
presence of mine enemies; Thou anointest  
my head with oil; my cup runneth over.  
Surely, goodness and mercy shall follow me  
all the days of my life; and I will dwell  
in the house of the Lord for ever.

## *In Loving Memory* **Sylvia Jane Madison**

***Entered This Life***  
September 20, 1926  
Brea, California

***Entered Eternal Life***  
December 2, 2014  
Fullerton, California

***Funeral Service***  
Tuesday, December 9, 2014  
10:00 a.m.  
Hilgenfeld Mortuary Chapel  
Anaheim, California

***Officiating***  
Pastor Will Stevenson

***Interment***  
Memory Garden Memorial Park  
Brea, California

***Funeral Director***  
Hilgenfeld Mortuary  
Anaheim, California

## ***Memorial Folder*** (Inner Panels)

***Includes service information & selected verse.***

# Autumn Path

*In attending this service  
may we be mindful that we are  
not only honoring the departed,  
but our presence helps to relieve  
the burdens of the bereaved.  
By sharing one another's grief  
may we transform feelings of  
sorrow and loss into memories  
of beauty, peace and love.*

**HILGENFELD**  
MORTUARY   
FD 291  
*Four Generations of Compassionate Care – since 1927*  
[www.hilgenfeldmortuary.com](http://www.hilgenfeldmortuary.com)

Printed by the Keith M. Merrick Co. • 412W



**Memorial Folder**  
(Outer Cover)

# Beach

*In attending this service  
may we be mindful that our  
presence not only honors the  
departed but also helps relieve  
the burdens of the bereaved.  
By sharing one another's grief  
may we transform feelings of  
sorrow and loss into memories  
of beauty, peace and love.*

**HILGENFELD**  
MORTUARY   
FD 291  
*Four Generations of Compassionate Care – since 1927*  
[www.hilgenfeldmortuary.com](http://www.hilgenfeldmortuary.com)

*Messenger*

© Lena Liu and Imperial Graphics, LTD  
20CSF MADE IN U.S.A.



**Memorial Folder**  
(Outer Cover)

# Butterfly

*In attending this service  
may we be mindful that our  
presence not only honors the  
departed but also helps relieve  
the burdens of the bereaved.  
By sharing one another's grief  
may we transform feelings of  
sorrow and loss into memories  
of beauty, peace and love.*

**HILGENFELD**  
MORTUARY



*Four Generations of Compassionate Care – since 1927*

[www.hilgenfeldmortuary.com](http://www.hilgenfeldmortuary.com)

SR196L-B ©Bass-Mollett Printed in U.S.A.

**Memorial Folder**  
(Outer Cover)

# Dove

*In attending this service  
may we be mindful that our  
presence not only honors the  
departed but also helps relieve  
the burdens of the bereaved.  
By sharing one another's grief  
may we transform feelings of  
sorrow and loss into memories  
of beauty, peace and love.*

**HILGENFELD**  
MORTUARY   
Four Generations of Compassionate Care – since 1927  
[www.hilgenfeldmortuary.com](http://www.hilgenfeldmortuary.com)



#489  
MESSENGER

Printed in U.S.A.

**Memorial Folder**  
(Outer Cover)

# *Eternal Springtime*

*In attending this service  
may we be mindful that our  
presence not only honors the  
departed but also helps relieve  
the burdens of the bereaved.  
By sharing one another's grief  
may we transform feelings of  
sorrow and loss into memories  
of beauty, peace and love.*

**HILGENFELD**  
MORTUARY   
*Four Generations of Compassionate Care – since 1927*  
[www.hilgenfeldmortuary.com](http://www.hilgenfeldmortuary.com)

68CSF  
*Messenger*

Printed in U.S.A.  
Eternal Springtime © 2012 Thomas Kinkadee



***Memorial Folder***  
(Outer Cover)

# Footprints

*In attending this service  
may we be mindful that our  
presence not only honors the  
departed but also helps relieve  
the burdens of the bereaved.  
By sharing one another's grief  
may we transform feelings of  
sorrow and loss into memories  
of beauty, peace and love.*

**HILGENFELD**  
MORTUARY  FD 291  
*Four Generations of Compassionate Care – since 1927*  
[www.hilgenfeldmortuary.com](http://www.hilgenfeldmortuary.com)

524 Bass-Mollett Printed in U.S.A. ©Scafa-Art 136-11341



**Memorial Folder**  
(Outer Cover)

# *Inscribed Memories*

*In attending this service  
may we be mindful that our  
presence not only honors the  
departed but also helps relieve  
the burdens of the bereaved.  
By sharing one another's grief  
may we transform feelings of  
sorrow and loss into memories  
of beauty, peace and love.*

**HILGENFELD**  
MORTUARY   
FD 291  
*Four Generations of Compassionate Care – since 1927*  
[www.hilgenfeldmortuary.com](http://www.hilgenfeldmortuary.com)

*Messenger*

135CSF  
MADE IN U.S.A.

*In Memory*

**Memorial Folder**  
(Outer Cover)

# Lavender Wildflowers

*In attending this service  
may we be mindful that our  
presence not only honors the  
departed but also helps relieve  
the burdens of the bereaved.  
By sharing one another's grief  
may we transform feelings of  
sorrow and loss into memories  
of beauty, peace and love.*

**HILGENFELD**  
MORTUARY  FD 291  
*Four Generations of Compassionate Care – since 1927*  
[www.hilgenfeldmortuary.com](http://www.hilgenfeldmortuary.com)

369 Bass-Mollett Printed in U.S.A.



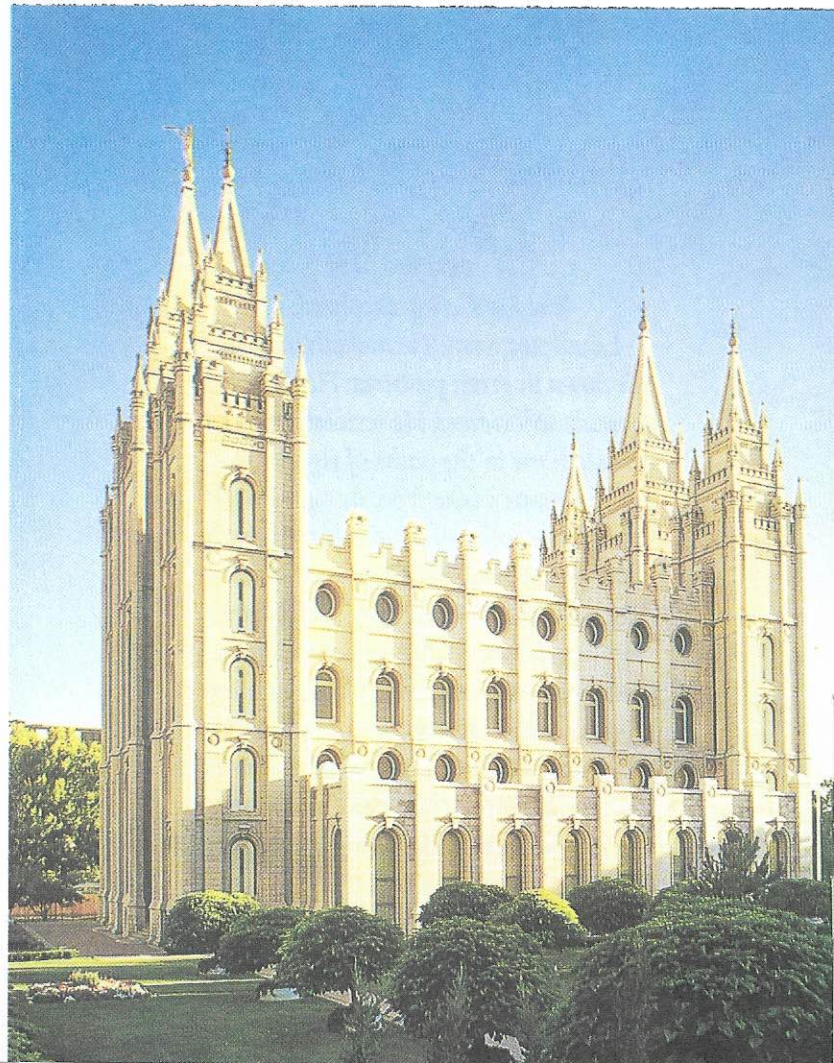
**Memorial Folder**  
(Outer Cover)

# *LDS Salt Lake Temple*

*In attending this service  
may we be mindful that our  
presence not only honors the  
departed but also helps relieve  
the burdens of the bereaved.  
By sharing one another's grief  
may we transform feelings of  
sorrow and loss into memories  
of beauty, peace and love.*

**HILGENFELD**  
MORTUARY  FD 291  
*Four Generations of Compassionate Care – since 1927*  
[www.hilgenfeldmortuary.com](http://www.hilgenfeldmortuary.com)

Salt Lake Temple: Salt Lake City, Utah  
Photograph of Salt Lake Temple © LDS Church. Used by permission. Bass-Mollett Printed in U.S.A.



***Memorial Folder***  
(Outer Cover)

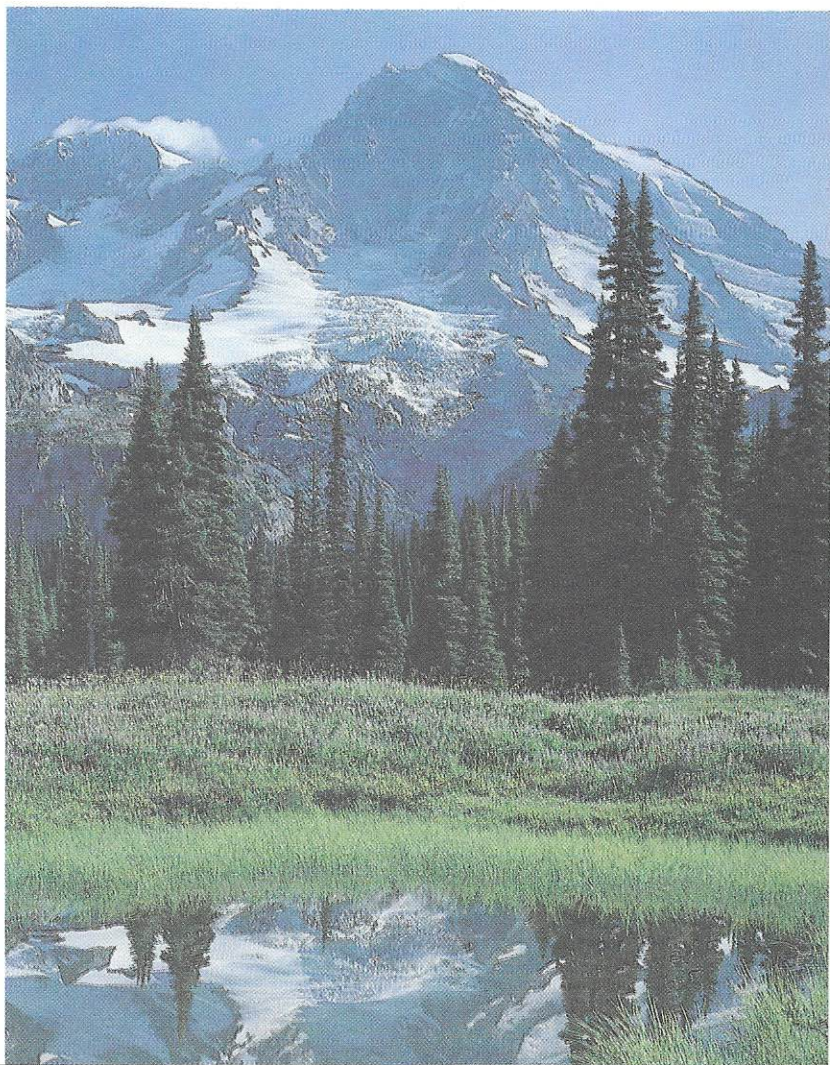
# Mount Rainier

*In attending this service  
may we be mindful that our  
presence not only honors the  
departed but also helps relieve  
the burdens of the bereaved.  
By sharing one another's grief  
may we transform feelings of  
sorrow and loss into memories  
of beauty, peace and love.*

**HILGENFELD**  
MORTUARY   
FD 291  
*Four Generations of Compassionate Care – since 1927*  
[www.hilgenfeldmortuary.com](http://www.hilgenfeldmortuary.com)

Printed in U.S.A.

#810  
MESSENGER



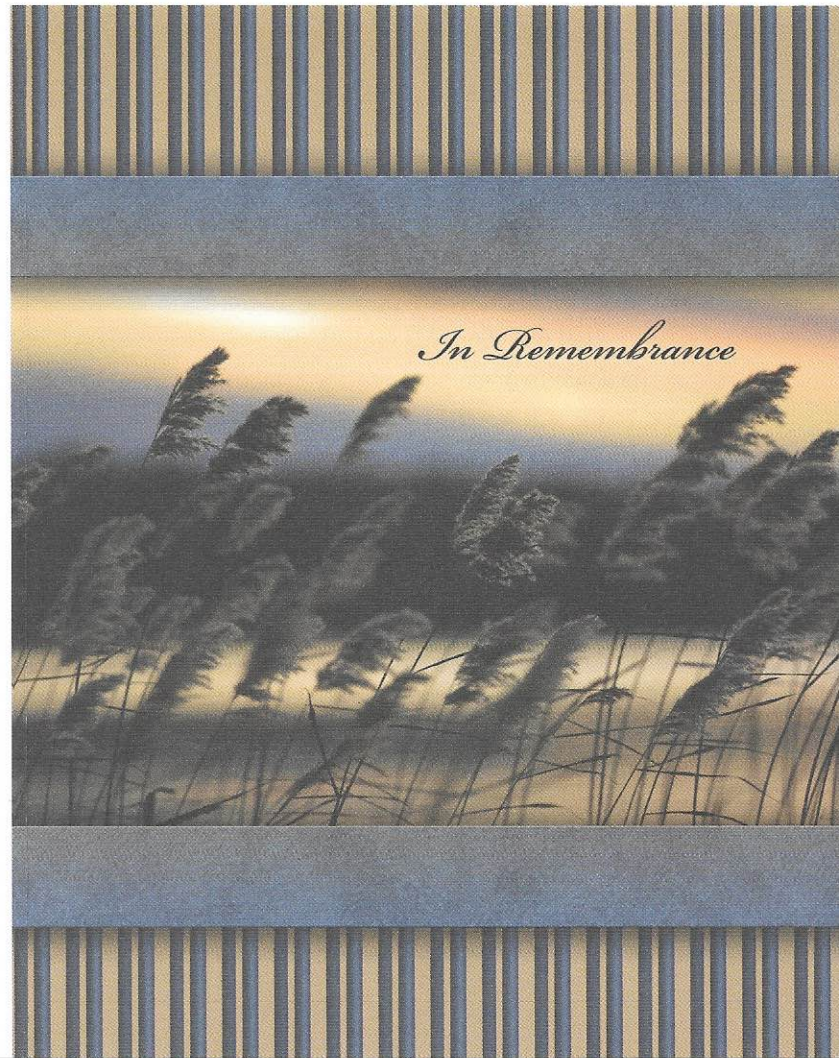
**Memorial Folder**  
(Outer Cover)

# Native Grasses

*In attending this service  
may we be mindful that our  
presence not only honors the  
departed but also helps relieve  
the burdens of the bereaved.  
By sharing one another's grief  
may we transform feelings of  
sorrow and loss into memories  
of beauty, peace and love.*

**HILGENFELD**  
MORTUARY   
FD 291  
*Four Generations of Compassionate Care – since 1927*  
[www.hilgenfeldmortuary.com](http://www.hilgenfeldmortuary.com)

712W • Printed by KMM



**Memorial Folder**  
(Outer Cover)

# *Nature's Flight*

*In attending this service  
may we be mindful that our  
presence not only honors the  
departed but also helps relieve  
the burdens of the bereaved.  
By sharing one another's grief  
may we transform feelings of  
sorrow and loss into memories  
of beauty, peace and love.*

**HILGENFELD**  
MORTUARY   
FD 291  
*Four Generations of Compassionate Care – since 1927*  
[www.hilgenfeldmortuary.com](http://www.hilgenfeldmortuary.com)

© 2004 Oleg Gavrilov, Hope Inc., Westlake, CA  
Printed in U.S.A.

721  
  
MESSENGER



***Memorial Folder***  
(Outer Cover)

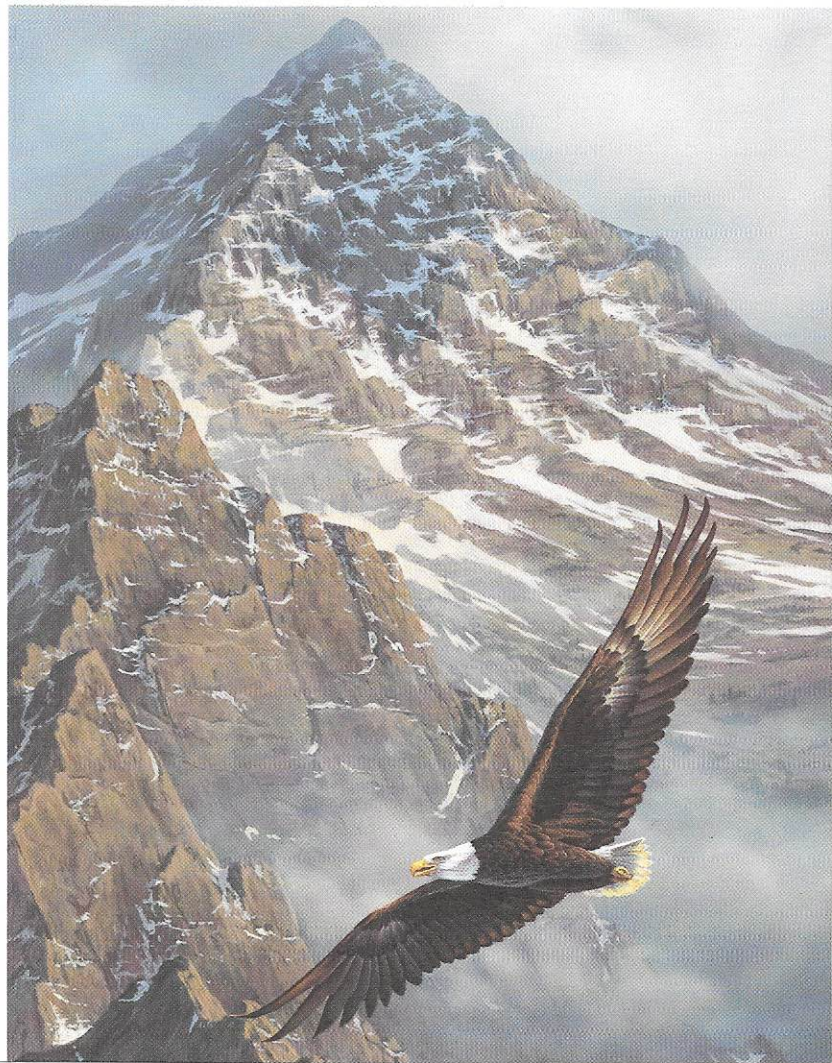
# On Freedom's Wing

*In attending this service  
may we be mindful that our  
presence not only honors the  
departed but also helps relieve  
the burdens of the bereaved.  
By sharing one another's grief  
may we transform feelings of  
sorrow and loss into memories  
of beauty, peace and love.*

**HILGENFELD**  
MORTUARY   
FD 291  
*Four Generations of Compassionate Care – since 1927*  
[www.hilgenfeldmortuary.com](http://www.hilgenfeldmortuary.com)

 731

© 2002 Rick Kelley  
Printed in U.S.A.



**Memorial Folder**  
(Outer Cover)

# Our Lady of Guadalupe

*In attending this service  
may we be mindful that our  
presence not only honors the  
departed but also helps relieve  
the burdens of the bereaved.  
By sharing one another's grief  
may we transform feelings of  
sorrow and loss into memories  
of beauty, peace and love.*

**HILGENFELD**  
MORTUARY FD 291  
*Four Generations of Compassionate Care – since 1927*  
[www.hilgenfeldmortuary.com](http://www.hilgenfeldmortuary.com)

Printed in U.S.A.

865 MESSINGER



**Memorial Folder**  
(Outer Cover)

# Passages

*In attending this service  
may we be mindful that our  
presence not only honors the  
departed but also helps relieve  
the burdens of the bereaved.  
By sharing one another's grief  
may we transform feelings of  
sorrow and loss into memories  
of beauty, peace and love.*

**HILGENFELD**  
MORTUARY   
FD 291  
*Four Generations of Compassionate Care – since 1927*  
[www.hilgenfeldmortuary.com](http://www.hilgenfeldmortuary.com)

 **Messenger** 440

Printed in U.S.A.

*In Memory*

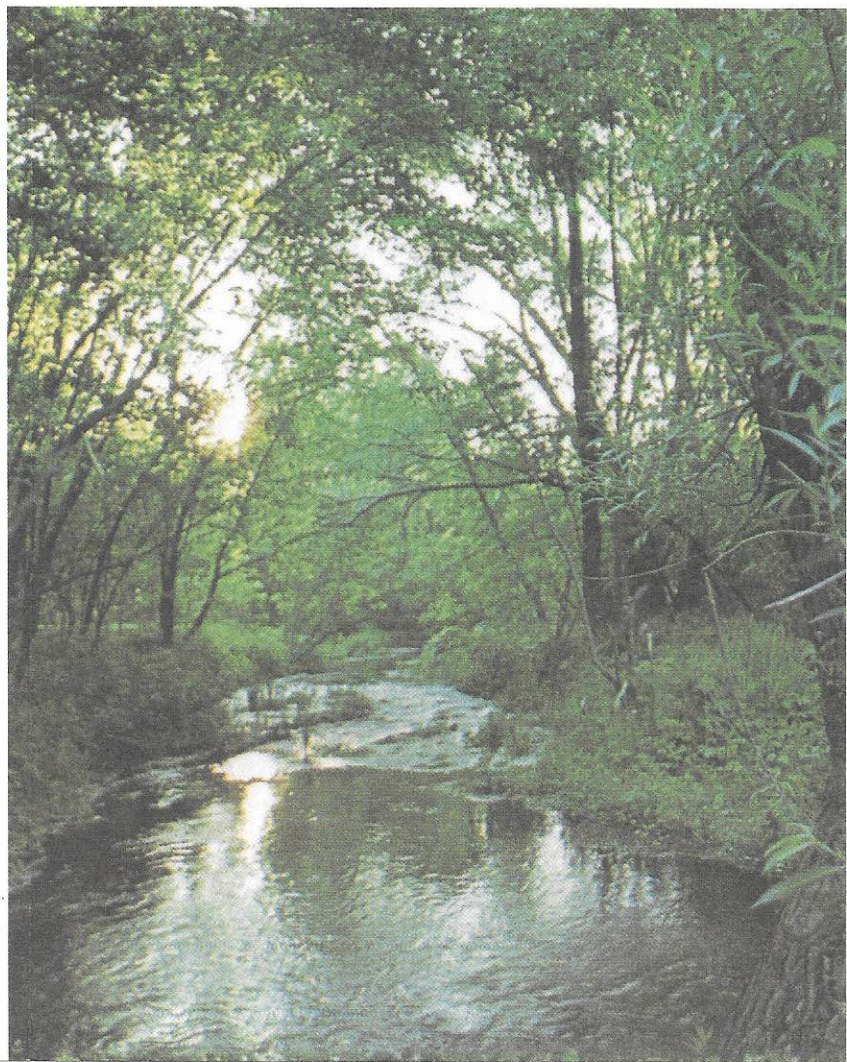
**Memorial Folder**  
(Outer Cover)

# Peaceful Streams

*In attending this service  
may we be mindful that our  
presence not only honors the  
departed but also helps relieve  
the burdens of the bereaved.  
By sharing one another's grief  
may we transform feelings of  
sorrow and loss into memories  
of beauty, peace and love.*

**HILGENFELD**  
MORTUARY   
FD 291  
*Four Generations of Compassionate Care – since 1927*  
[www.hilgenfeldmortuary.com](http://www.hilgenfeldmortuary.com)

PRINTED IN THE USA NO.6022W



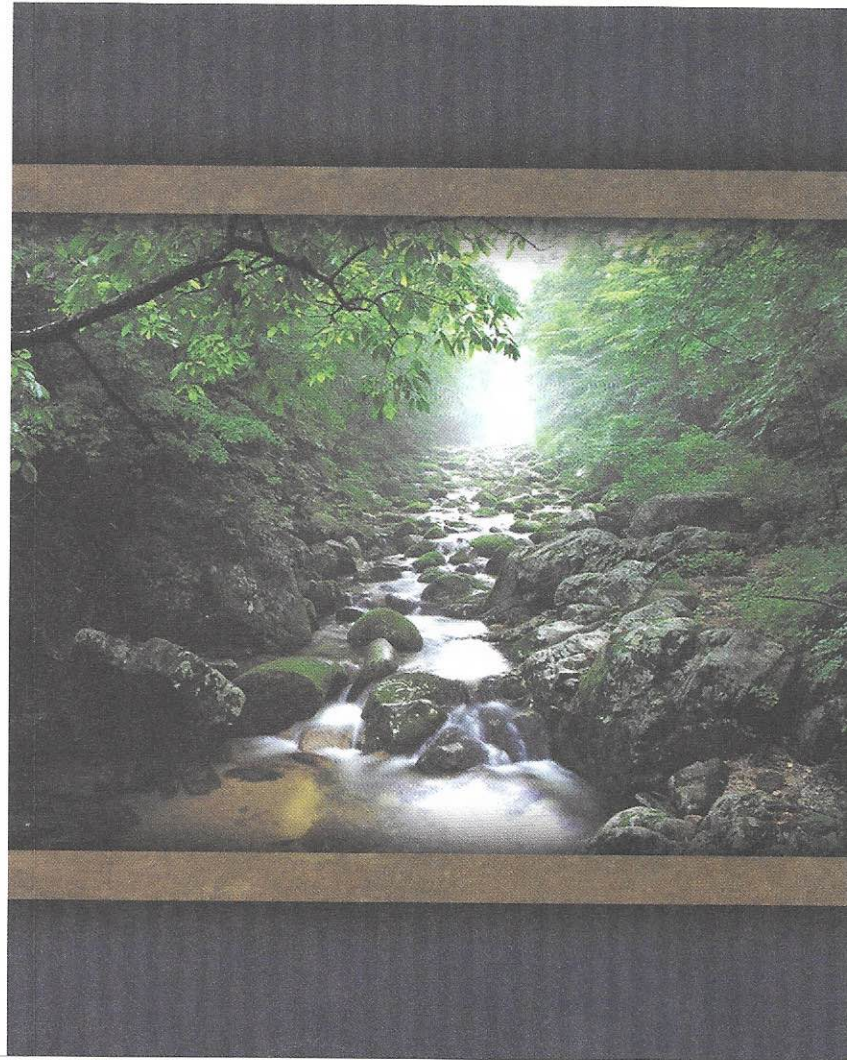
**Memorial Folder**  
(Outer Cover)

# Rocky Stream

*In attending this service  
may we be mindful that our  
presence not only honors the  
departed but also helps relieve  
the burdens of the bereaved.  
By sharing one another's grief  
may we transform feelings of  
sorrow and loss into memories  
of beauty, peace and love.*

**HILGENFELD**  
MORTUARY   
FD 291  
*Four Generations of Compassionate Care – since 1927*  
[www.hilgenfeldmortuary.com](http://www.hilgenfeldmortuary.com)

Printed by the Keith M. Merrick Co. • 472W



**Memorial Folder**  
(Outer Cover)